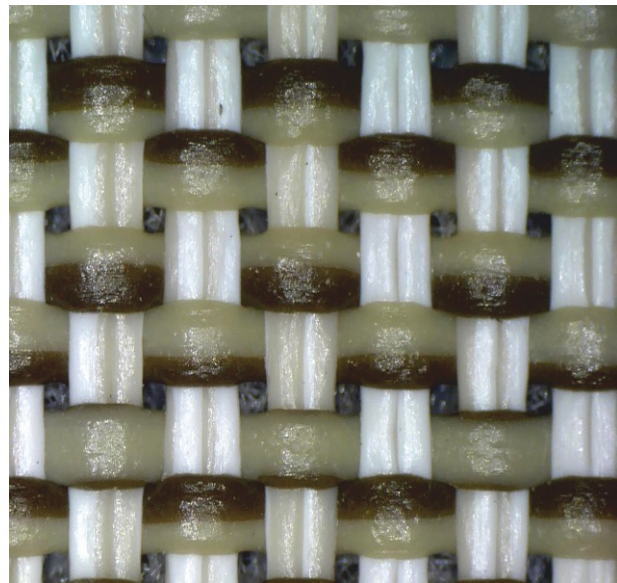


Exact core yarn centricity



Fewer cross marks due to soft bobbins



Bicolor fabric

### Technical Data

No. of ends:	1
Coating:	mono- or bicolor
Core yarn:	PES Multifilament *
Coating material:	PVC *
Yarn diameter range:	0.25 - 1.0 mm *
Extruder screw diameter:	30 or 35 mm *
Extruder temperature:	up to 270°C *
Bobbin traverse length:	250 or 300 mm *
Tube inside diameter:	76.2, 82.55 or 94 mm *
Package diameter:	max. 320 mm
Package weight:	max. 20 kg

Combination of all maximum values is not possible  
\* others on request

### Options

- Easy storage doffer for winder
- Yarn diameter measuring and regulation system
- Water chiller with integrated tank
- Bobbin labelling system
- Hopper loader for extruder
- Customized alarm management

TRAWON + SAHM



TRAWON + SAHM



TRAWON+SAHM\_e09/16 Design, configuration and scope of supply are subject to change without notice and errors are excepted. Drawings/photos not binding.



**WINDERS + SYSTEMS**  
a member of Starlinger Group

Georg Sahn GmbH & Co. KG · Sudetenlandstrasse 33 · 37269 Eschwege · Germany  
Tel.: +49 5651 804-0 · Fax: +49 5651 13620 · Internet: www.sahmwinder.de · E-mail: info@sahmwinder.de

TRAWON Co. Ltd. · #705 SungWoo B/D · 49 Mapo-daero · Mapo-gu · Seoul · Korea (Zip-Code: 04158)  
Tel.: +82-70-8721-2964 · Fax: +82-10-3709-2964 · E-mail: shhan2434@hanafos.com

Dieser Prospekt ist nur in englischer Sprache verfügbar.

Single End Extrusion Coating Line

# YarnStar 3+

Coating - Cooling - Winding<sup>+ Automation</sup>



up to  
1500 m/min



**WINDERS + SYSTEMS**  
a member of Starlinger Group



## YarnStar 3+

Coating - Cooling - Winding - Automation

No compromise between efficiency and quality

### Market segments

Single end coated yarns for textile and technical applications, mono- and bicolor

### Applications

Sunscreens, home textiles, upholstery fabrics, outdoor textiles, wall coverings, floor coverings, carpets and mattresses, specific coatings for technical yarns

### Character of coated yarn

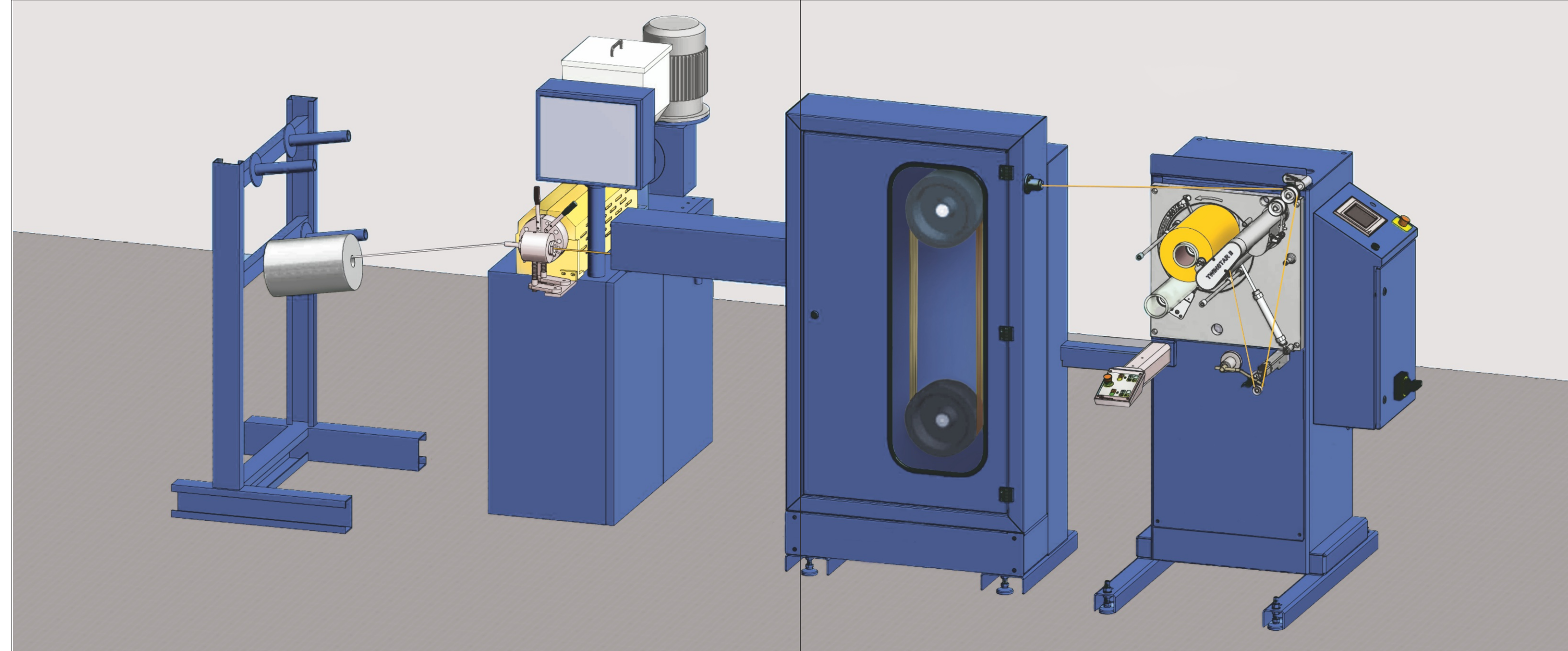
- Fire retardant
- Durable
- Anti-bacterial
- Thermostable
- Low-shrinkage

### Main advantages

- Integrated control for complete line
- Operation speed up to 1500 m/min
- Excellent coated yarn quality
  - core yarn centricity
  - smooth surface coating
  - minimized cross marks
- Automatic winder
  - metered yarn length
  - automatic bobbin change-over
  - continuous production
- Minimized space requirement
- Minimum waste - only during line start-up

### Your benefit

- Short ROI period
- Highest efficiency and productivity
- Excellent coated yarn quality
- Optimum basis for following processes
- Strong technology support
- Operator convenience in operation and maintenance
- Combination of proven components



### Components

- Creel with yarn tension unit
- Extruder with die head assembly
- Cooling device with water bath (chill unit)
- TWINSTAR II Automatic Precision Cross Winder
- Central control with monitoring system of all machine and process data
- Online quality control and monitoring system



Extruder



Chill unit



Winding and optional automation