

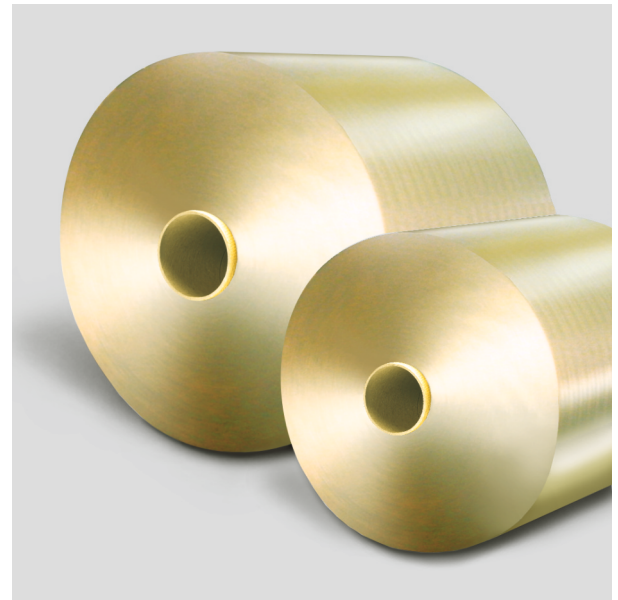
SAHM 840XE Jumbo Winder

Market Segments:

- PAN Precursor Fibers

Main Advantages:

- Electric push-off device
- Electronic input of all winding parameters
- yarn length, package diameter)
- Alarm management (yarn break,
- Package weight up to 500 kg
- Excellent package quality



Technology:

Drive:	Frequency-controlled
Frame:	1 deck
Titer:	12 K-60 K (higher on request)
Tube inside diameter:	152 mm (others on request)
Maximum tube length:	850 mm (others on request)
Traverse length:	800 mm (others on request)
Maximum package diameter:	1000 mm
Winding speed:	50-200 m/min. (higher on request)
Maximum package weight:	500 kg

Combination of all maximum values is not possible.

Features / Options:

- Electronically controlled variable winding ratio
- Central Process Control Unit (HMI-Touch Screen) for input, display and storage of process and machine parameters for all winders (i.e. winding ratio, speed, yarn tension, etc.)
- Speed synchronization with the preceding process
- Pneumatic mandrel
- Doffing timer function
- Suction device for doffing procedure

